

FlashTrak® BLE System

The FlashTrak BLE System utilizes Bluetooth Low Energy technology to provide a temperature monitoring solution designed for exporters and for suppliers delivering inbound loads of perishable food to supermarkets, restaurants, distribution centers, and warehouses. This solution is highly efficient in that it uses minimal power, connects and transfers information in milliseconds, and does not require device pairing. It is used effectively to verify temperature data at check points between departure and final delivery, last mile delivery and cross dock applications.

The FlashTrak BLE System is comprised of the FlashLink BLE Gateway and the FlashLink BLE In-Transit Logger. The gateway is powered by either DC or PoE (Power over Ethernet) and should be installed at the receiving dock. Upon arrival at the dock, the gateway detects the device signal, captures trip data (delivery location, temperature graph, table, date, time, and summary statistics) and automatically sends it to DeltaTrak's FlashTrak Cloud Services platform. Data can be received from up to 100 feet (or 30 meters) from the receiving dock. Users can access the data from any mobile device and share it with multiple stakeholders.

The FlashLink BLE In-Transit Logger is a single-use device that tracks environmental conditions inside vehicles during shipment. The BLE logger wirelessly transmits data via Bluetooth Low Energy (BLE) to the BLE gateway, without the need to retrieve the device. This Bluetooth Low Energy device does not require pairing, unlike standard Bluetooth devices.

The FlashTrak BLE System is ideal for post trip analytics such as calculating dwell time, comparing data from previous trips, assessing routes and driver performance, and evaluating reefer equipment performance to help stakeholders make critical cold chain decisions and process improvements.

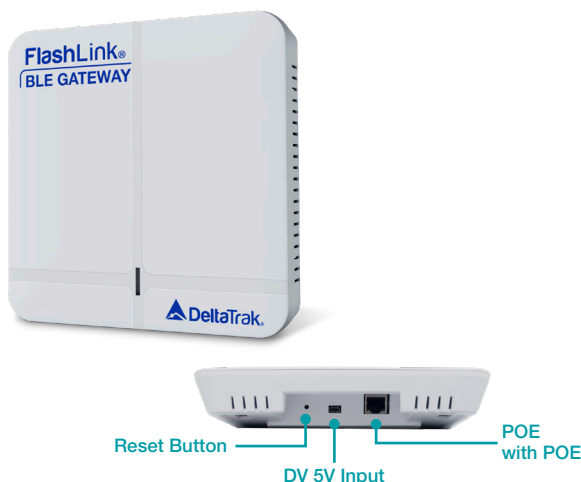




Model 40980-01

FlashLink. BLE Logger

- Single-use Bluetooth Low Energy data logger
- Measures from -30C° to 60C°
- 5-minute logging interval
- Stores up to 60,000 data points
- Tracks environmental conditions inside vehicles during shipment
- Wirelessly transmits data by Bluetooth to Gateway device
- No need to locate logger for downloading
- Temperature and location data stored in cloud-based FlashTrak web portal



Model 40993

FlashLink. Bluetooth Gateway

- Receives data from FlashLink BLE Loggers
- Scans >200 Loggers per second, up to 100 ft away
- Transmits via Wi-Fi or Ethernet connection
- Data automatically uploads to FlashTrak cloud-based application
- Powered by DC 5V or Power over Ethernet (PoE)
- Data parameters via configuration software

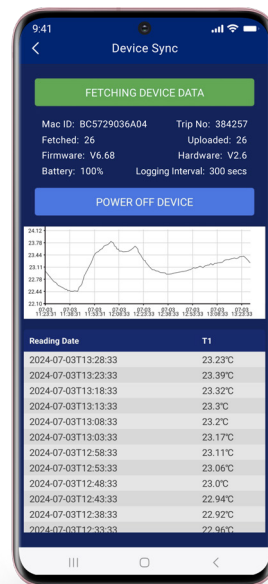
Model 42000

FlashTrak. BLink Mobile App

- Syncs with FlashLink BLE Loggers
- Displays temperature in a graph and table format
- Trip number
- Battery Percentage
- Logging Interval
- Number of data points fetched
- Number of data points uploaded
- Cellular or Wi-fi network to retrieve and send Logger data to FlashTrak cloud service
- Powers off BLE Loggers



Scan QR Code for App
on Google Play Store



FL0111_25C1

