

FlashTrak[®]

Supply Chain Cloud Services

Supply Chain Management System

FlashTrak allows you to focus on your core business while our solution helps monitor your supply chain.



Knowing the condition of your shipment anywhere anytime



Reduce waste with continuous condition monitoring and awareness

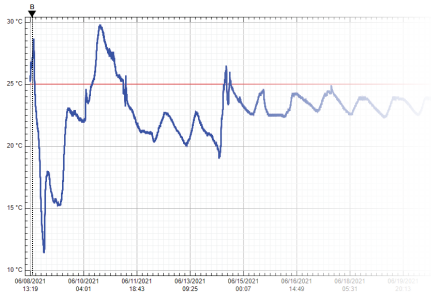


Risk mitigation through data analysis to identify Supply Chain challenges



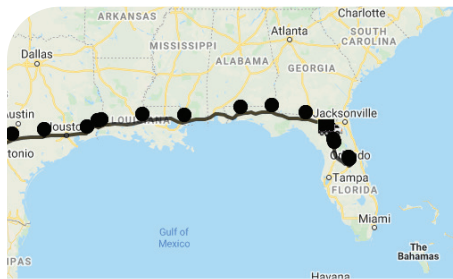
Grow your bottom line

For over 30 years Deltatrak has provided customers with world-class supply chain solutions. FlashTrak is a leading real-time cloud service for supply chain visibility, built on modern technology that transforms your supply chain management.



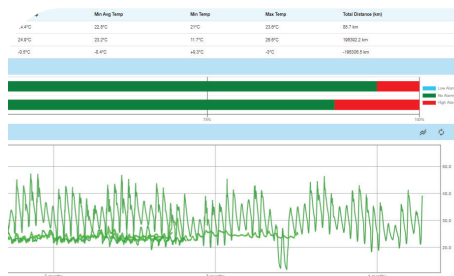
A Data Driven Decision Engine

FlashTrak collects data from IoT devices in real-time. Advanced features help identify shipment conditions patterns and improves the decision making process at the operational level throughout your supply chain.



Continuous Improvements

Real-time monitoring provides stakeholders exceptional visibility to know exactly where your cargo is at all times and enables risk management. Real-time data and alerts empower decisions that can reduce product waste and improve ROI.



Compliance Automation

FlashTrak will scale quickly to meet your business needs, utilizing our expertise in matching the right system components to achieve your compliance and quality management goals with SOP, HACCP, FDA, USDA, GxP and 21 CFR part 11.

Live Data Visibility

Our advanced IoT loggers record and transmit time, temperature, humidity, light, shock and location data to our secure FlashTrak platform in real time.

Precision Traceability

Monitor your products throughout the Supply Chain. Tracking location and critical environmental conditions in real-time is critical to identifying the cause of any alerts.

Reduce Product Waste

Having access to environmental deviations in real time allows you to respond immediately and take corrective action.

Business Intelligence & Analytics

Data stored in FlashTrak can be leveraged to provide improved forecasting, performance, and cost controls.

Building Trust

FlashTrak can be shared with your customers and partners, allowing end-to-end visibility between customers and intermediaries, elevating accountability through transparency.

All Transportation Modes

FlashTrak is compliant for all modes of transportation: air, road, rail, and sea.

Benefits of FlashTrak

FlashTrak Services Flow

Global visibility of real-time data reduces product waste, with continuous improvements in efficiency and profitability. Our solutions seamlessly integrate into your supply chain operations.



FlashTrak Subscription Includes



FlashTrak Cloud Service

An unlimited number of users can be set up on our secure cloud web portal, with access from any internet-enabled device.



Assigned Program Manager

DeltaTrak professional services team will assign a program manager to your account, providing a deep expertise and analysis in supply chain, logistics and product security.



IoT Device Management

Data loggers are matched to your unique applications; including product profiles, and recycling.



FlashTrak Training

User training is provided, maximizing the benefits and effectiveness of using the system. Custom product profiles can be co-developed and will help automate information processing.



Support

DeltaTrak is dedicated to providing the highest quality technical support to assist customers with successful implementation and problem solving.



Analytics and Dashboards

Dashboards and standard reports are included to accelerate use and adoption, helping to meet process improvement and operational goals.



Actionable Notification

Focus decision-making on the most important events with alerts provided through SMS and email. Tactical decisions can be made while shipments are in transit.

Additional Options and Services



FlashTrak Maritime Services

Provides visibility of ocean container location, date of departure, and ETA.



Custom Training

Our onboarding team works directly with your staff and partners to ensure a seamless implementation.



BI and Analytics

Advanced business intelligence features help identify patterns and improve the decision-making process at the operational level.



FlashTrak API

API enabling connectivity with ERP, MRP and other 3rd party software solutions.

| | FlashTrak View | FlashTrak | FlashTrak Maritime Service | FlashTrak Connect |
|----------------------------|----------------|------------------|----------------------------|-------------------|
| Cost | Free | Subscription Fee | Additional Service Fee | Free Mobile App |
| Shipment Search | ✔ Included | ✔ Included | | ✔ Included |
| Shipment Analysis | ✔ Included | ✔ Included | | ✔ Included |
| Shipment Route Map | ✔ Included | ✔ Included | | ✔ Included |
| Celsius / Fahrenheit scale | ✔ Included | ✔ Included | | ✔ Included |
| Timezone | GMT 0 | Customizable | | GMT 0 |
| Enter Shipment Details | | ✔ Included | | |
| Create Product Profiles | | ✔ Included | | |
| Notifications/Alerts | | ✔ Included | | |
| Reports | | ✔ Included | | |
| Active Shipment Dashboard | | ✔ Included | | |
| Shipment Sharing | | ✔ Included | | |
| Complete Shipment | | ✔ Included | | |
| Geo Fencing | | ✔ Included | | |
| User Permissions | | ✔ Included | | |
| Account Manager | | ✔ Included | | |
| User Training | | ✔ Included | | |
| Maritime Location Tracking | | | ✔ Included | |

For more information, please contact DeltaTrak Sales at 1-800-962-6776 or salesinfo@deltatrak.com

