

FlashLink®

BLE Mobile Gateway

Model 40992

BLE Mobile Gateway Set Up



Installation

- Locate your vehicle or refrigeration unit's battery.
- With your vehicle or unit powered off connect the contact leads of the Gateway to the battery. Match with the corresponding colors – Red to Red and Black to Black.



- Once the Gateway's leads are connected, power on your vehicle/refrigeration unit.
- The Gateway's LED section will start to flash red. This indicates that the Gateway was successfully turned on and is sending data depending on the programmed intervals.



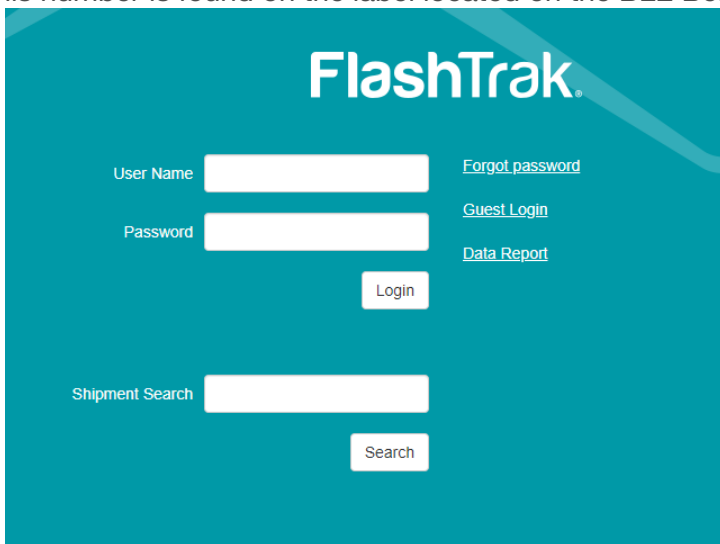
- Proceed to next section to verify that data is being sent to our FlashTrak platform. Before continuing with the steps below
- After verifying data is being received on FlashTrak using the provided adhesive tape the Gateway can be attached to the battery or engine bay.
- Make sure the selected surface has been cleaned and free of dirt/debris.

Quick Data Check

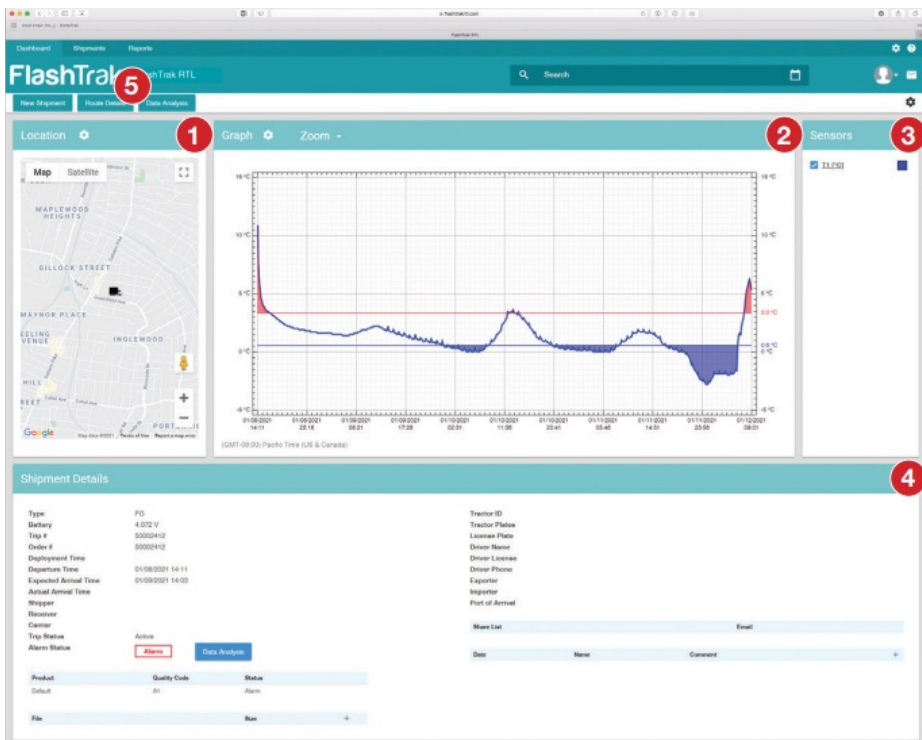
a. Navigate to www.flashtrakrtl.com

b. Type in the trip number of the BLE beacons into the shipment search adding a .1 to the end number. Ex: 68245391.1

This number is found on the label located on the BLE Beacon.

The image shows the FlashTrak web application interface. At the top, the 'FlashTrak' logo is displayed in white on a teal background. Below the logo, there are two main sections. The first section is for user login, featuring a 'User Name' label and a text input field, a 'Password' label and a text input field, and a 'Login' button. To the right of the login fields are three links: 'Forgot password', 'Guest Login', and 'Data Report'. The second section is for shipment search, featuring a 'Shipment Search' label and a text input field, and a 'Search' button.

c. This will take you to a shipment page view where you can see current details about the device



- 1. Location** - This box displays a map with the current location of the device.
- 2. Graph** - This will display the Temperature or Humidity Graph for the entire trip.
- 3. Sensors** - The controls which sensor will be visible on the graph. T1 temperature RH humidity.
- 4. Shipment Details** - This box gives a recap on all settings assigned to this logger.
- 5. Route Details** - This button will open the map and display the route taken by the logging device.

For more assistance with FlashTrak or other product questions Contact our technical support staff at 800-390-0804 or techsupport@deltatrac.com.



DeltaTrak Corporate

📍 P.O. Box 398 Pleasanton CA 94566
☎ (925) 249-2250 (800) 962-6776
💻 www.deltatrak.com

DTI Mexico International

📍 Guadalajara, Mexico
☎ +52-33-3188-3161 / 36712190
💻 www.deltatrakmexico.com

DTI South America SA

📍 Santiago, Chile
☎ +562 2758 2866 +569 7477 1061
💻 www.deltatraksouthamerica.com

DTI China Limited

📍 Shenzhen China
☎ +86-755-8442-9388/2837-2741
2837-2664 | 8923-2778
💻 www.deltatrakchina.com.cn

DTI Europe bvba

📍 Antwerp Belgium
☎ +32 (0) 3-455-61-25
💻 www.deltatrakeurope.be

DTI Japan Limited

📍 Osaka, Japan
☎ +81-6-6616-5900
💻 www.dtijapan.co.jp

DTI Asia Pacific

📍 NT, Hong Kong
☎ +852-3568-5538
💻 www.dtiap.com

DTI South Pacific

📍 Auckland, New Zealand
☎ +64 9 5757 886
💻 www.deltatraksouthpacific.com

DTI South Africa

📍 Western Cape, South Africa
☎ +27 79 519 5047
💻 www.deltatrak.so.za