



**FlashLink® BLE Logger
with Sharp Tip Probe
(Model 40982)**



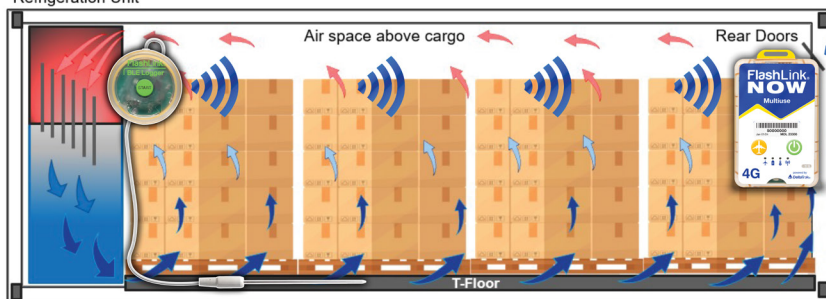
**FlashLink® NOW 4G/5G
Real Time Logger
(Model 22391)**

FlashLink®

Real-Time Mobile BLE Gateway Kit (Models 41016 and 41017)



Refrigeration Unit



RTL FEATURES:

- Connect More:** Seamlessly communicate with up to 25 BLE loggers at once
- Affordable Insight:** Cost-effective pallet-level monitoring
- All-in-One:** Temperature, humidity, light, shock, tilt, motion and location in real time
- Pinpoint Accuracy:** Location tracking within $\pm 10\text{m}$
- Shock & Tilt Intelligence:** Advanced 3-axis shock & tilt detection
- Smart Security:** Light detection door-open alerts with delivery timestamps
- Trusted Precision:** NIST-traceable temp monitoring
- Ready for Any Load:** Wide temperature range from -30°C to $+70^{\circ}\text{C}$
- No Data Left Behind:** Large local storage safeguards information, even offline
- Powerful Cloud Analytics:** Data seamlessly pushed to the cloud for actionable insights.

BLE FEATURES:

- Fast Sync:** Supports rapid data transfer to RTL for seamless updates
- At-a-Glance Status:** LED indicators for quick visual feedback
- Data Guaranteed:** Real-time visibility + mobile app reporting = zero data loss
- Extended Coverage:** Up to 200 days of local storage
- Precision Control:** NIST-traceable sensors (-30°C to $+70^{\circ}\text{C}$)
- Flexible Monitoring:** External probe for monitoring internal product pulp temperature
- Accurate Tracking:** Logger locations tied directly to RTL



Model 22391

FlashLink. NOW 4G/5G Real Time In-Transit BLE Gateway

- Equipped with global network communication compatibility and precision location accuracy through Wi-Fi triangulation positioning
- Monitors and provides alerts for in-transit real-time location, temperature, humidity, shock, and light
- A unified cloud platform connecting cold chain IoT devices and applications, with seamless integration, automation, built-in analytics and business intelligence.
- USB option to download PDF trip data should GSM Network not be available



Model 40982

FlashLink. BLE Logger with Sharp Tip Probe

- Single-use BLE temperature data logger
- Tracks environmental conditions inside vehicles during shipment
- Wirelessly transmits data via BLE to Gateway device
- Temperature and location data stored in cloud-based web portal

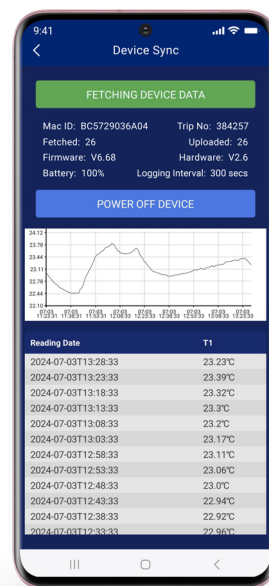
Model 42000

BLink Mobile App

- Syncs with FlashLink BLE Loggers
- Displays temperature in a graph and table format
- Trip number
- Battery Percentage
- Logging Interval
- Number of data points fetched
- Number of data points uploaded
- Cellular or Wi-fi network to retrieve and send Logger data to FlashTrak cloud service
- Powers off BLE Loggers



Scan QR Code for App
on Google Play Store



FL0122_2511

