

In-Transit Data Loggers

DeltaTrak's family of data loggers are essential tools for monitoring temperature sensitive products as they travel through the cold chain. Complete trip history is recorded and downloaded as secure PDF reports with summary data, graphs, and tables. Real-Time loggers send data to FlashTrak cloud-based supply chain management system, providing current location and conditions inside containers and reefer trucks. Trip details, alerts and notifications are available 24/7. Critical cold chain data drives decisions to minimize cargo losses, identify supply chain issues and make operational improvements.

FlashLink. Real-Time Mobile BLE Gateway Kit

- Each RTL Logger seamlessly communicates with up to 25 BLE loggers simultaneously.
- High-Accuracy location tracking with an accuracy of ± 10 meters.
- Monitor temperature, humidity, light, shock, location, and motion.
- Experience fast BLE data transfer rates to the RTL, ensuring timely updates and seamless communication.
- Cloud Communication for further analysis, generating insights and visualizations



FlashLink. PDF Elite In-Transit Loggers

- Single use Temperature or Temperature and Humidity Logger
- No software needed to download data
- Includes Shadow Log Technology
- User-programmable options
- Large, easy to read LCD display

FlashLink. NOW 4G/5G Real-Time In-Transit Logger

- Next generation global cellular real-time loggers with 4G/5G LTE and 2G backup
- Monitors location, temperature, humidity, light, and shock
- LCD Display confirms activation, cellular connection, battery and temperature (C/F)
- High-precision location tracking via cellular and Wi-Fi triangulation with immediate light sensor notification for unplanned security breaches
- Non-Lithium Battery; 1 year shelf life; 12, 30, 70, 90 or 120-day trip duration



FlashLink. NOW 4G/5G In-Transit Loggers

- Next generation global cellular real-time loggers with 4G LTE and 2G backup
- Monitors location, temperature, humidity, light, shock
- LCD Display confirms activation, cellular connection, battery, current and min/max temperature
- AIR model includes non-lithium battery, 15-day trip duration and automatic data transmission pause during flight
- Lithium Battery; 1 year shelf life; 12, 70, 90 or 120-day trip duration



FlashLink. RTL NOW 4G/5G-2T In-Transit Logger

- Next generation global cellular real-time loggers with 4G LTE and 2G backup
- Monitors location, temperature, light, shock
- LCD Display confirms activation, cellular connection, battery, current and min/max temperature for both internal and external sensors
- High-precision location tracking via cellular and Wi-Fi triangulation with immediate light sensor notification for unplanned security breaches
- Monitors two temperatures, plotted on one graph allowing for comparison of temperature of supply air from reefer and return air in back of container/truck
- Lithium Battery; 1 year shelf life; 70-day trip duration



FlashLink. RTL NOW CO2 In-Transit Logger

- Next generation global cellular real-time loggers with 4G LTE and 2G backup
- Monitors location, temperature, light, humidity, shock, CO2
- LCD Display confirms activation, cellular connection, battery, current internal and min/max temperature sensor and external temperature/humidity/CO2 sensors
- High-precision location tracking via cellular and Wi-Fi triangulation with immediate light sensor notification for unplanned security breaches
- Lithium Battery; 1 year shelf life; 70-day trip duration



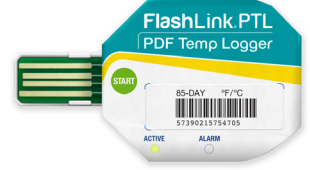
FlashLink. Mini PDF In-Transit Logger

- Single use Temperature Logger
- No software needed to download data
- Includes Shadow Log Technology
- User-programmable options



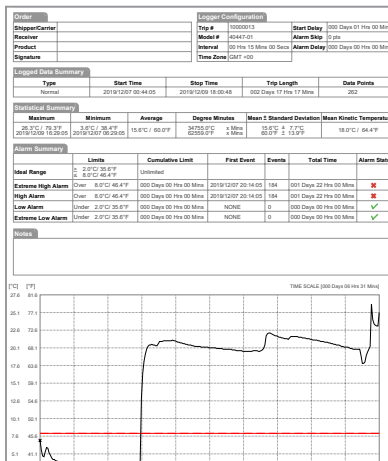
FlashLink. PTL PDF Temperature Logger

- Single use Temperature Logger
- No software needed to download data



FlashTrak. BLE System

The FlashTrak BLE System utilizes Bluetooth Low Energy technology to provide a temperature monitoring solution designed for exports and for suppliers delivering inbound loads of perishable food to supermarkets, restaurants, distribution centers, and warehouses. This solution is highly efficient in that it uses minimal power, connects and transfers information in milliseconds, and does not require device pairing. It is used effectively to verify temperature data at check points between departure and final delivery, last mile delivery and cross dock applications.



FlashLink. PDF Report

These FlashLink PDF In-Transit Data Loggers are plug-and-play units with on-board, built-in software. Receivers can download PDF reports without additional software on their PC. No cradle or reading devices are needed because it also features a built-in USB connector.

Our patented Shadow Log® feature guarantees trip temperature data even if the shipper fails to start the unit.*

Available on the FlashLink PDF Elite and FlashLink Mini PDF

