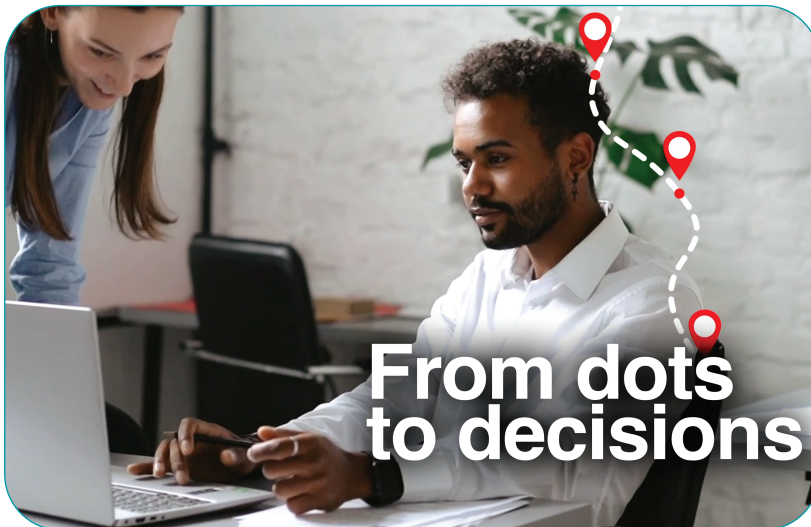
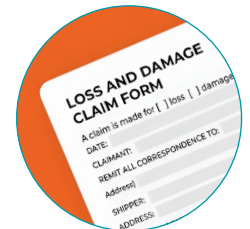


## Cold Chain Logistics

Introducing the **UBQ Network Cold Chain Logistics Portal**. Empower your operations with a unified network of tools engineered to scale, reinforce, and protect your temperature-sensitive shipments. Transform real-time cold chain data into actionable decisions.



Receiver Rejections



Carrier Claims



Product Shrink

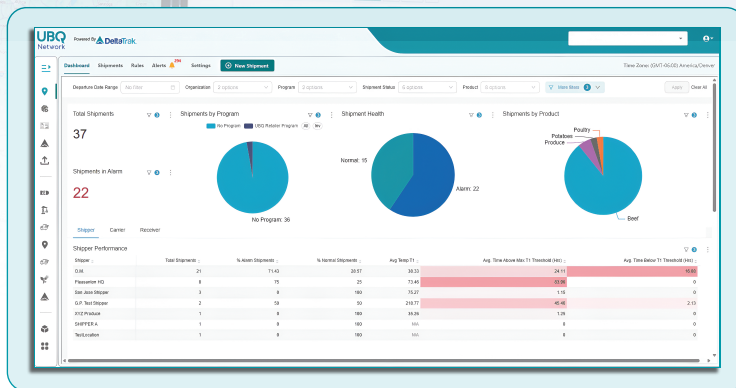
## Real-Time Logger Data and Route Intelligence

- **Custom-Fit Cold Chain Monitoring:** Take control with configurable thresholds and custom event markers designed to detect temperature excursions in real time and empower teams to intervene before losses occur.
- **Optimize Operational Performance:** Immediate visibility via a centralized notification center allows teams to track issues from alert to resolution. This ensures accountable, consistent corrective actions that drive freshness and on-time outcomes across hundreds of logistics lanes.

- **Segmented Trip Views: Turn Hours of Data Assembly into Instant Insights:** Eliminate manual journey mapping on shipments to accelerate root-cause triage, prove chain of custody for faster claims processing, and collaborate effortlessly with your network partners.
- **Simplify Your Workflow:** Save time by immediately prioritizing critical shipments, eliminating recurring root causes of temperature excursions, and providing targeted quality audits.

**When KPIs are trapped in fragmented portals and spreadsheets, visibility plummets and decision-making stalls**

UBQ makes it easy to benchmark performance across distribution centers, carriers, and shippers. By integrating order data (purchase orders and sales orders), it routes critical operational insights to the right teams so they can act immediately to drive value.



## Customizable Dashboards and Integration Ready Data



**Proactive Risk Mitigation:** Visualize end-to-end supply chain health on a single screen, allowing your team to identify hot spots and potential failures before they impact your cargo.

**Accelerate High-Impact Results:** Drive operational excellence and protect your bottom line by targeting the core KPIs that dictate performance.

**Audit-Ready Data Exports:** Streamline compliance while enabling deeper analytics with flexible data export capabilities.

**Open APIs for Seamless Integration:** Connect effortlessly with your enterprise planning, transportation management, and business intelligence systems, as well as partner portals, to eliminate manual data entry.



**Transform Real-Time Cold Chain Data into Actionable Decisions**  
**UBQ Network**  
Powered By  DeltaTrak